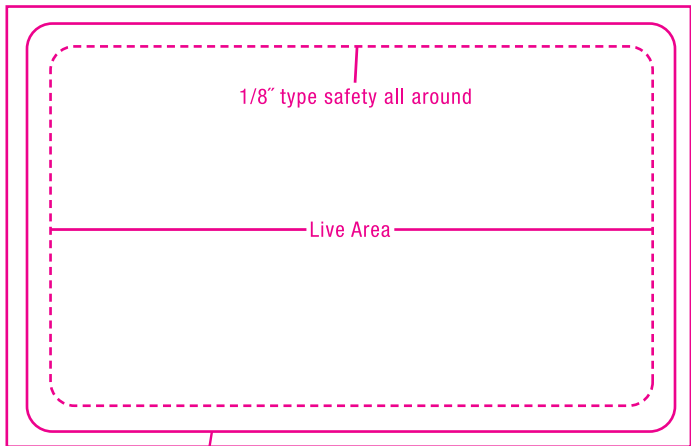


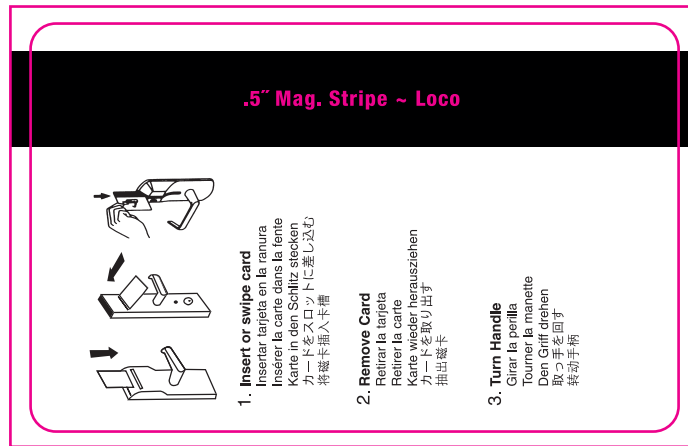
## 580-HK (HOTEL KEYCARD STANDARD TEMPLATE)



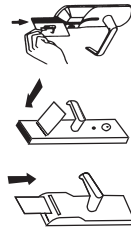
Trim is 3.375" x 2.125"

Bleed Area 3.563" x 2.293"

fold on dotted line to view front to back orientation



### .5" Mag. Stripe ~ Loco



#### 1. Insert or swipe card

Inserir tarjeta en la ranura  
Insérer la carte dans la fente  
Karte in den Schlitz stecken  
カードをスロットに差し込む  
将磁卡插入卡槽

#### 2. Remove Card

Retirar la tarjeta  
Retirer la carte  
Karte wieder herausziehen  
カードを取り出す  
抽出磁卡

#### 3. Turn Handle

Girar la perilla  
Tourner la manette  
Den Griff drehen  
取っ手を回す  
转动手柄